

Improving **R**angeland and **E**cosystem Management Practices of Smallholder Farmers Under Conditions of Climate Change in Sesfontein, Fransfontein and Warmquelle areas of the Republic of Namibia



IREMA

KUNENE PROJECT

Progress Report
June 2019 - April 2020

a climate adaptation project financed by the
Green Climate Fund

Project Fact Box

Project name	SAP001: Improving rangeland and ecosystem management practices of smallholder farmers under conditions of climate change in Sesfontein, Fransfontein, and Warmquelle areas of the Republic of Namibia		
Financing	Green Climate Fund grant through the Simplified Approval Process (SAP)		
Duration	2018 – 2023 (5 years)		
Location	Kunene Region Learning sites at Warmquelle, Sesfontein, Fransfontein & Khowarib		
Project budget	Total budget: USD 10 million	Grant: USD 9.3 million	Co-financing: USD 700,000
Project Partners	National Designated Authority: Ministry of Environment, Forestry & Tourism	Accredited Entity: Environmental Investment Fund of Namibia	Executing agencies: Ministry of Agriculture, Water & Land Reform
Critical sustainability partners	AgriBusDev, Agro-Marketing & Trade Agency, UNAM, Meteorological Service of Namibia		
Beneficiaries	Smallholder farmers in Sesfontein, Fransfontein, Khowarib and Warmquelle areas Direct: 30 366; Indirect: 14 034; Total Beneficiaries: 44,400; of which 50 per cent are women		



Contents

Project overview	3
Project objectives	4
Anticipated project impacts	5
Project governance	6
Project progress	7
Field activities in pictures	10
Key planned activities 2020/21	11
Challenges	12
Contacts	13



Project overview

Safeguarding natural capital that generates ecosystem services to sustain agricultural production systems in Kunene Region.



Improving Rangeland and Ecosystem Management Practices of Smallholder Farmers Under Conditions of Climate Change in Sesfontein, Fransfontein and warmquelle areas of the Republic of Namibia; is the Green Climate Fund's (GCF) first approved project under the Simplified Approval Process (SAP).

The project area; the vast Kunene Region in north-western Namibia, grapples with the impacts of climate change with forecasts predicting increased lengths of the dry season. The most vulnerable populations, are small-scale and subsistence farmers, mostly women, whose livelihood depends entirely on livestock and rain-fed agriculture for food security and income.

To reduce the vulnerability of smallholder farmers, this project will invest in climate-smart agriculture techniques by improving access to water and increasing both livestock and crop production. on crop production and bush encroachment on land and livestock productivity.

GCF Adaptation results areas

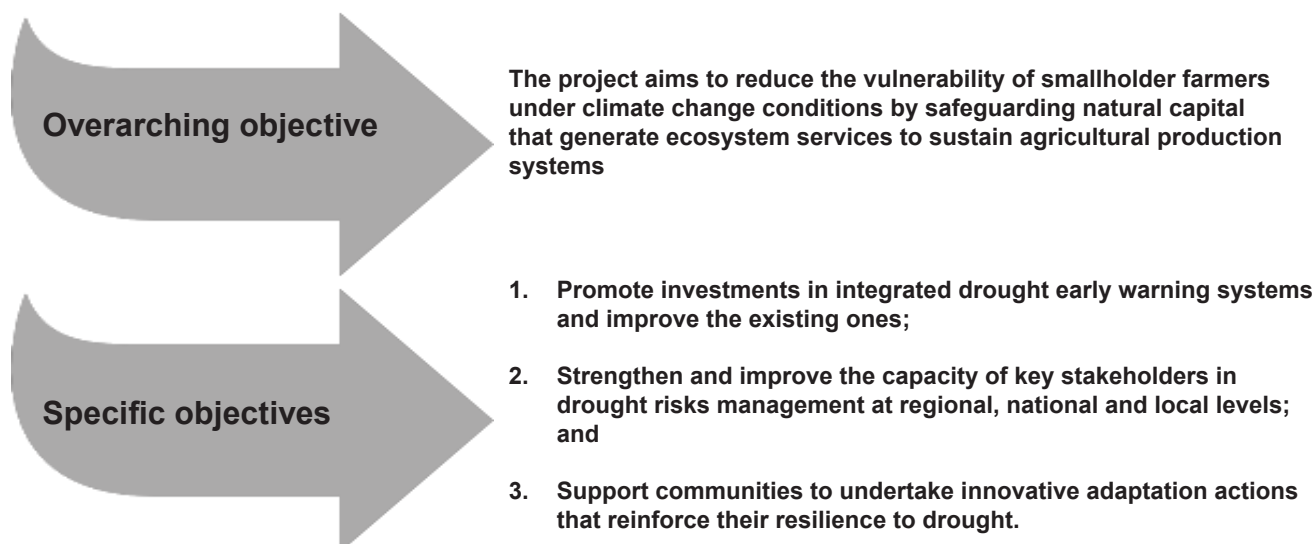
Increased resilience of most vulnerable people and communities



Increased resilience of health and well-being, and food and water security



Project objectives



Project components



COMPONENT 1:
Promote cost effective investments in early warning systems that determine climate-driven vulnerabilities and effective adaptation options



COMPONENT 2:
Reducing climate driven risks in target ecosystem and land through supporting innovative drought adaptation actions



COMPONENT 3:
Knowledge and information support mechanisms

Project budget

Component	Amount (for entire project)	Local currency (Namibian Dollars)	Co-financing	GCF funding amount
Component 1: Promote cost effective investments in early warning systems that determine climate-driven vulnerabilities and effective adaptation options	840,000 (8.4%)	10,920,000.00	200,000	640,000
Component 2: Reducing climate driven risks in target ecosystem and land through supporting innovative drought adaptation actions	7,610,652 (76.2%)	96,338,472.88	200,000	7,410,651.76
Component 3: Knowledge and information support mechanisms	865,721 (8.7%)	9,954,371.57	100,000	765,720.89
Project Management (Including Monitoring)	683,627 (6.8%)	6,287,155.55	200,000	483,627.35
Grand total	10,000,000	130,000,000	700,000	9,300,000

Anticipated impacts

Climate change forecasts predict an increased length of the dry season in Kunene region, with the most vulnerable population being small-scale and subsistence farmers, mostly women. They depend entirely on rain-fed agriculture of staple grains for income and household food security. The project aims for the following bold impacts:

44,400

**Total number of expected beneficiaries
(30,066 direct beneficiaries and a further 14,034 indirect beneficiaries)**



Direct beneficiaries of sustainable & climate-smart agriculture investments

- Development & operationalization of two Green Schemes – Warmquelle & Khowarib, sized at a combined **22 hectares of arable land**.
- Construction of Fodder and Fresh Produce Storage Facility at Khowarib
- Procurement and distribution of 1,000 drip irrigation kits for backyard gardens
- Construction of Fresh Produce Storage Facility at Warmquelle
- Establishment of a small stock revolving scheme under which **2500** drought resilient small stock breeds will be procured for distributed to more than **100 vulnerable households**
- Development of two community gardens at Fransfontein & Sesfontein
- Establishment of backyard orchards for **300 farmers**,
- Procurement and distribution of **1000** Drip Irrigation kits for backyard gardens to vulnerable families
- Distribution of drought resistant seed varieties to benefit **2000** horticultural and 7000 dryland farmers
- Procurement & distribution of **6000** energy-efficient stoves
- Training of Farmers Association on Climate Smart Agricultural practices



Rangeland management practices

- Restoration of priority degraded areas covering **80,000 hectares** in Kunene region through appropriate rangeland management practices that include rotational grazing, ecosystem recovery, and grass seeding.



Water infrastructure development

Year round access to water for both human and livestock consumption; through:

- Rehabilitation of at least 35 water points
- Renovation of the 6km galvanized pipeline from Ongongo fountain to Warmquelle Green Scheme
- Rehabilitation of earth dam at Warmquelle Green Scheme
- Rehabilitation of three boreholes at Khowarib Green Scheme



Early warning system & forecasting investments

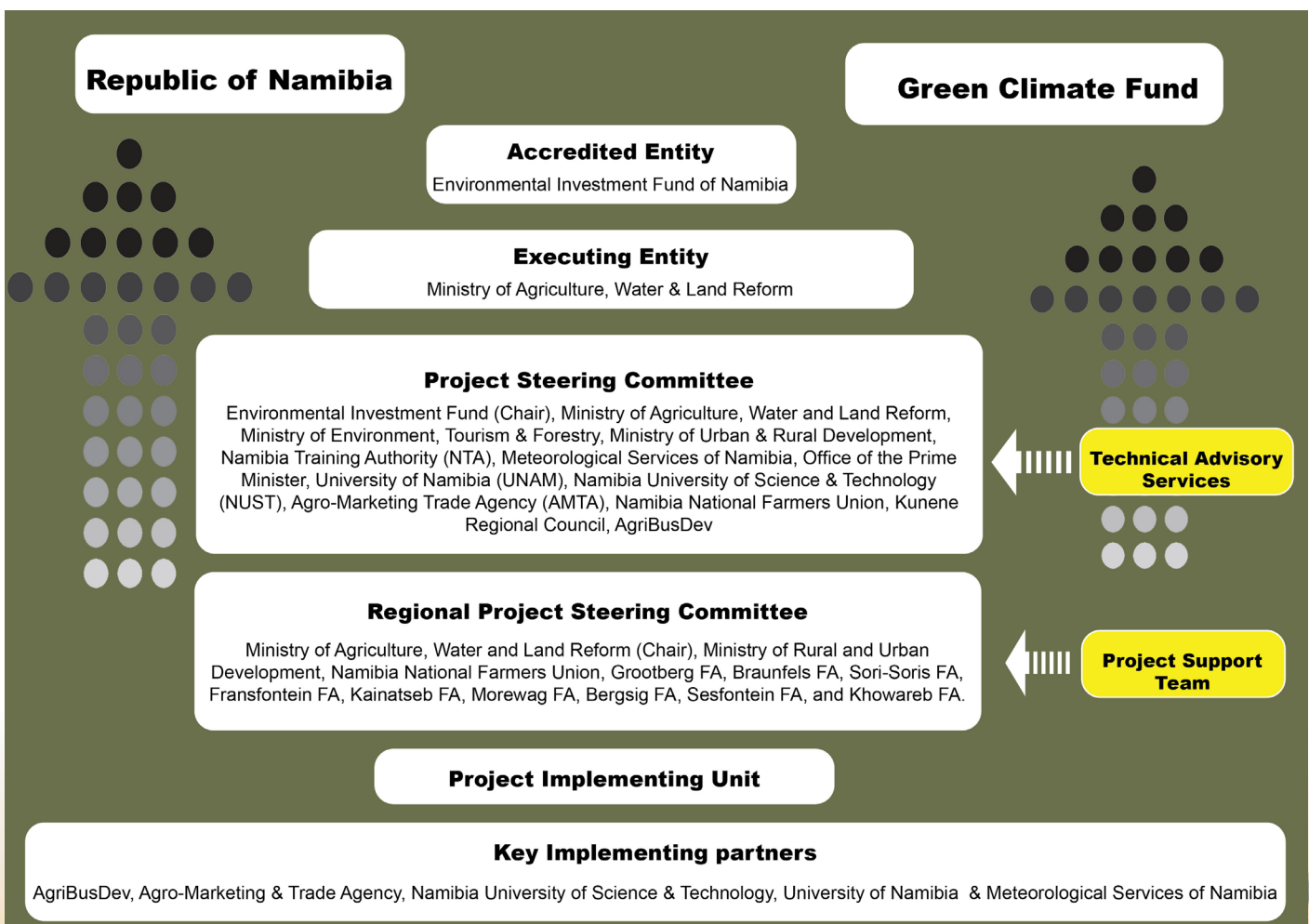
- Develop an Early Warning System that is tailored for Kunene Region,
- Training on climate information services for smallholder farmers.

Project governance

The project is being implemented by the EIF, through the Ministry of Agriculture, Water and Land Reform (MAWLR) as an Executing Entity (EE). The EE is carefully considered very crucial, notably to the scaling up countrywide and sustainability of the project results beyond the five-year period.

A number of key stakeholders have been selected purposefully to enable development of adaptive capacities within these institutions, so that they provide these services long when the project ends.

The administration of the project is carried out by a Project Implementation Unit (PIU) under the overall guidance of the MAWLR and EIF through the Project Steering Committee. The PIU is led by the National Project Manager, who is responsible for ensuring that the project is fully managed and implemented in accordance with its objective.



IREMA Project implementation structure

Project progress



Key milestones

1

Project launch

The launch was officiated by the Hon. Pohamba Shifeta, Minister of MEFT and hon. Anna Shiweda, Deputy Minister of MAWLR, at Warmquelle on 13 June 2019.

2

**Project Implementation
Unit established**

The Regional Project Technical Officer and National Project Manager came on board in June and July 2019 respectively. MAWLR provided office space and two vehicles as part of the co-financing.

3

**Project Steering
Committees established and
functional**

National and Regional Project Steering Committees established and functional. Each committee has held two meetings thus far. Minutes available.

4

Inception workshop

The project inception workshop was held on 29-30 October 2019, to foster project ownership by stakeholders and seek their input for incorporation into the project workplan and budget. Inception report available.

5

Project identity

Project Logo and Corporate guidelines were developed and approved by the PSC.

Project progress

6

Technical field assessment of core project sites

The PUI led a technical team comprised of Engineers from AgriBusDev, Dunamis Consulting Engineers and the MAWLR to assess infrastructure at the Green Schemes at Sesfontein, Fransfontein and Warmquelle. The assessment report will guide the infrastructure development process for each site.

7

Water Quality Sampling and Analysis

Field Report and Analysis Report available.

8

Soil Sampling

Soil Sampling completed, however analysis is pending and on hold due to COVID-19 Crisis.

9

Topographic Survey

Land Surveyors have been appointed to undertake a topographic survey. Field work completed. Report compiled and available.

10

Drought tolerant seed varieties for smallscale farmers

1.5 tonnes of drought tolerant seeds (maize, sorghum, pumpkin and sweet melons) procured and distributed. This exercise benefited **150 farmers**, 60% male and 40% female. Report compiled.

11

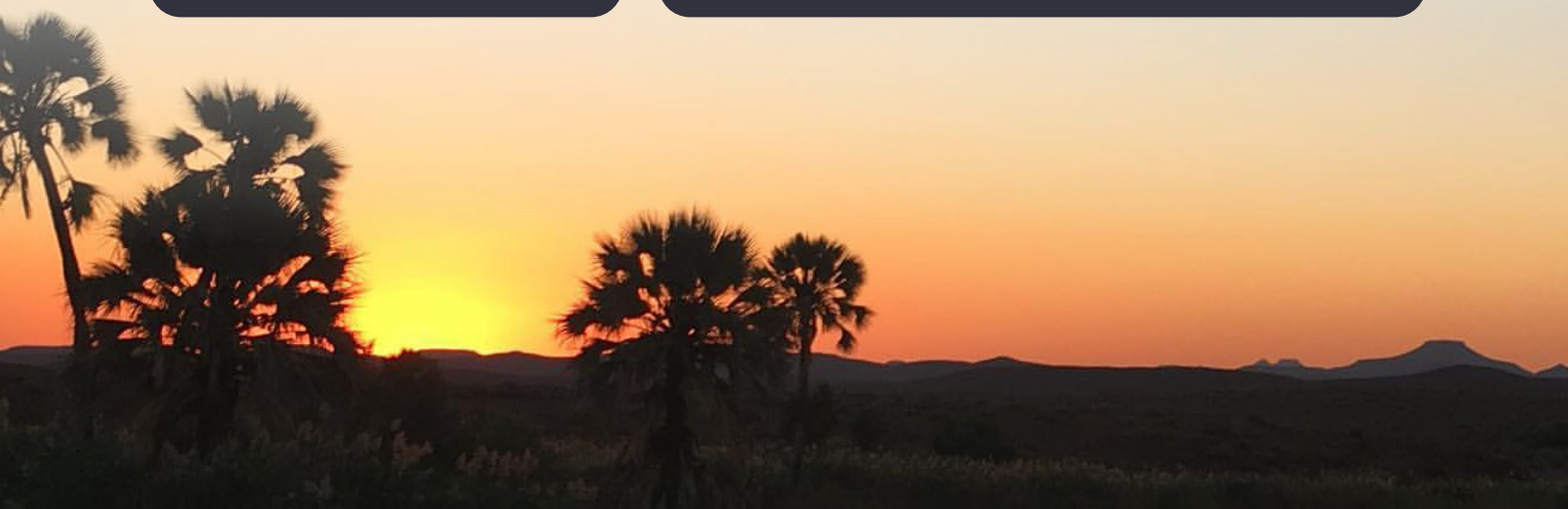
Farmers Associations survey

The study was conducted in order to determine the operational status of Farmer's Associations as well as their capacity building needs related to climate change mitigation and adaptation.

12

Completion of annual progress Report

Annual progress report compiled and submitted to the Green Climate Fund, the National Designated Authority (NDA) and Executing Entity (EE).



Project progress

13

MOA: Development & Operation of Green Schemes

MOA for the development and operation of Warmquelle and Khowarib Green Schemes to be reviewed by the Attorney General for a legal opinion.

14

Development & Operation of Warmquelle and Khowarib Green Schemes

Pre-qualification Bidding documents finalized, presented to EIF, MAWLR & AgriBusDev; and ready for Tender advertizing.

15

Small Stock Revolving Scheme

Beneficiaries Selection criteria developed, and awaiting PSC approval. Both implementation modalities and RFQs have been finalized. To be advertized soon.

16

Horticulture Programme

Beneficiary Selection criteria developed, and awaiting PSC approval. Registration of farmers underway.

“

... capacity building for the Farmers Associations in the Kunene Region will be undertaken by mainstreaming disaster risk management & climate change adaptation in their operations.

”

Mr. Percy Misika

Executive Director: Ministry of Agriculture, Water & Land Reform

IREMA Inception Workshop, 29 October 2019, in Opuwo.



Project activities



The Project Inception workshop brought together key stakeholders representing Farmers Unions, the Regional Council and MAWLR extension workers to align on project activities and expected outcomes.



Regional Project Steering Committee



The PUI conducted a Farmer's survey at various Farmer's Association in the region in order to determine their operational status as well as their capacity needs related to climate change mitigation and adaptation.



The PUI led a technical team comprised of Engineers from AgriBusDev, Dunamis Consulting Engineers and the MAWLR to assess infrastructure at the Green Schemes at Sesfontein, Fransfontein and Warmquelle.



Project challenges

DELIVERY CHALLENGES	ADAPTIVE MEASURES/SOLUTIONS
Cumbersome and lengthy approval system resulting in delays in approval of final submissions in terms of procurement of goods and services.	Apply some pressure to expedite the decision process in terms of convening both formal and informal mechanisms to ensure timely decisions are taken.
Limited availability of some key stakeholders during the inception phase due to their involvement in the Drought Relief Programme.	Applied diplomacy and negotiation skills to ensure stakeholders are engaged.
COVID-19 Pandemic – delayed activities planned for March and April.	The use of telecons as well as internet communication ensured timely decisions and approvals.

“ ... a lack of resources such as operational funds and human resources to adequately respond to climate related threats have been our main challenge over the last 5 years.

Ms. Patience B. Hoaes
Chairperson: Morewag Farmers Association



Contacts

Project Executing Entity (EE)

Ministry of Agriculture, Water & Land Reform

Mr. Percy Misika
Executive Director
Ministry of Agriculture, Water and Land Reform,
Government Office Park, Private Bag 13184, Windhoek



Project Implementing Entity

Environmental Investment Fund

Benedict Libanda
Chief Executive Officer
P.O. Box 28157, Auas Valley, Windhoek, Namibia
Tel: +264 61 4317702, BLibanda@eif.org.na



Karl Aribeb
Director of Operations
P.O. Box 28157, Auas Valley, Windhoek, Namibia
Tel: +264 61 4317701, KAribeb@eif.org.na



Project Steering Committee (PSC)

Ms. Johanna Andowa
Chairperson: Project Steering Committee
Ministry of Agriculture, Water and Land Reform
Johanna.Andowa@mawf.gov.na
Mob: +264 812557539



Ms. Beata Xulu	Namibia National Farmers Union (NNFU)
Mr. Paulus Ashili	Ministry of Environment, Forestry & Tourism
Dr. Simon Angombe	University of Namibia
Mr. Alexander Meroro	Namibia University of Science and Technology
Mr. Japhet litenge	Office of the Prime Minister
Ms. Julia Nambili	AgriBusDev
Mr. Richard Kambinda	Namibia Training Authority
Mrs. Mildred Kambinda	Ministry of Agriculture, Water and Land Reform
Mr. Sakeus Enkono	Agro Marketing & Trade Agency (AMTA)
Ms Sieglinde Somses	Meteorological Service of Namibia
Mr. Petrus C Nangolo	Ministry of Agriculture, Water and Land Reform
Ms. Belinda Tjipangandjara	Ministry of Urban and Rural Development
Mr. Erich Dennis Petrus	Ministry of Agriculture, Water and Land Reform - DAPEES

Project Implementing Unit

Ms. Mirjam Kaholongo
National Project Manager
P.O. Box 28157, Auas Valley, Windhoek, Namibia
Mob: +264 811616447
MKaholongo@eif.org.na

Mr. Uapindikiraije Kazahe
Regional Technical Officer
Mob: +264 811255325
uapiikazahe@gmail.com



Regional Focal Point

Mr. Daniel Hakweenda
Agricultural Scientific Officer (DAPEES: Kunene Region)
Ministry of Agriculture, Water & Land Reform
Mob: +264 818983820, Email: bradan2009@gmail.com

Environmental Investment Fund of Namibia

8933 Heinitzburg Heights,
c/o Heinitzburg & Burg Streets,
Klein Windhoek

<http://www.eif.org.na>

Ministry of Agriculture, Water and Land Reform

Government Office Park
Private Bag 13184, Windhoek
Tel: (+264-61) 208 7016
Fax: (+264-61) 208 7082

<http://www.mawf.gov.na>